

SAWCut

Green Laser Sawing & Shaping System

The SAWCut is a Green Diode Laser machine for the sawing and shaping of round and fantasy stones. The SAWCut System is one stage in the manufacturing process of the diamond: After the stone is analyzed and marked by the OGI Marker, the marked stone is transferred to the SAWCut System, which acts upon the information derived from the stone's markings.



ESTIMATED PRODUCTION FROM SAWCUT

Single-Sided Sawing

Diamond Weight	Carats / 24 Hours
0-0.10	80
0.11-0.15	95
0.16-0.25	110
0.26-0.50	125
0.51-0.75	140
0.76-1.00	150

Mass Sawing (Plate Sawing)

Diamond Weight	Carats / 24 Hours
0-0.10	100
0.11-0.15	110
0.16-0.25	130
0.26-0.50	150
0.51-0.75	180
0.76-1.00	200

TECHNICAL INFORMATION:

Dimensions:
185mmL x 120mmH x 85mmW
Weight:
420 Kg (926 Pounds)
Laser Source:
YAG green laser
Wave Length:
532nm
Axis Travel:
200 mm x 200 mm x 50 mm (We can supply higher)

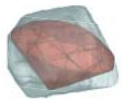
KEY FEATURES:

- Minimum waste from the rough material due to smooth sawing of the diamond's surface
- Reduced weight loss owing to a double-sided sawing option
- Customized shapes can be created and sawn
- Reduced sawing risk due to a built-in protection mechanism
- Uninterrupted round-the-clock operation by means of an automatic program

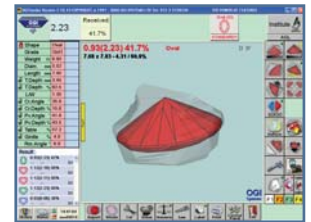
THE LEADING ROUGH SYSTEMS



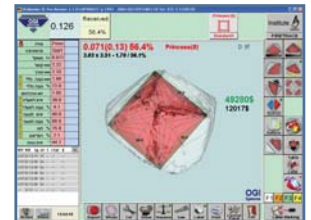
OGITENDER®
Portable Rough Analyzer
Up to 100 Carats



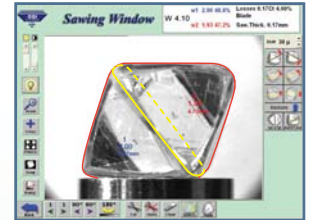
OGIRough®
Rough Analyzer
Up to 1000 Carats



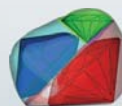
OGISCANNER™
Rough Laser Mapping



OGIMARKER®
Rough Automatic
Laser Marking



OGIMARKER
Automatic USB
Laser Marking System



OGIMicroMARKER
Compact Laser Marking System



SAWCUT™
Green Laser Sawing

