

SAWCut[®]

American Green Laser Diode for Sawing & Shaping

SAWCut[®] is a Green Diode Laser machine for sawing and shaping of round and fantasy stones. SAWCut[®] saws the rough and smooths the table surface of the diamond.

SAWCut[®] is a Diamond Sawing American Green Diode Laser system technology that performs a smooth cut of the rough diamond surface, utilizing its maximum potentiality in the manufacturing process of the rough stone. This process drastically minimizes the waste from the rough material.

The SAWCut[®] System is one stage in the manufacturing process of the diamond: Prior to sawing, the diamond's surface needs to be measured, evaluated and designed. This can be done by means of the OGIRough analyzing, planning and marking systems, such as the Scanox Marker or OGIMarker[®]. The marked stone is then transferred to the SAWCut[®] Diamond Sawing Laser System, which acts upon the information derived from the stone's markings, and performs a smooth cut of the rough and fancy diamond surface.



Product Highlights:

- State-of-the-art 100W high power Green Diode YAG laser
- Powerful software for sawing & shaping
- Includes shape editor to create, customize and import your own shapes or models
- Advanced built-in cooling system
- Single or double-sided sawing to reduce weight loss in final polishing and to receive smooth surface sawing
(1.7%-2.5% loss in single-sided sawing, less than 2% loss in double-sided sawing)
- High capacity cassette for 54 stones
- Enhanced sawing time
- Designated to work non-stop around the clock
- Low maintenance system
- Advanced control system to ensure sawing process as planned
- Option to change the sawing parameters during operation for optimization of the sawing range
- Built-in compressor system for cooling of stone



All pictures on the catalogue are for presentation only

Estimated Production by SAWCut®

Single-Stone Sawing

WEIGHT	CARAT / 24 h
0 - 0.10	80
0.11 - 0.15	95
0.16 - 0.25	110
0.26 - 0.50	125
0.51 - 0.75	140
0.76 - 1.00	150

Mass Sawing (with Cassette)

WEIGHT	CARAT / 24 h
0 - 0.10	100
0.11 - 0.15	110
0.16 - 0.25	130
0.26 - 0.50	150
0.51 - 0.75	180
0.76 - 1.00	200

Technical Information:

Dimensions: W:85 mm x L:185 mm x H:120 mm

Weight: 420 kg (926 lbs)

Voltage: 220V

Laser Source: YAG green diode laser

Wave Length: 532 nM

Axis travel: 200 mm x 200 mm x 50 mm (*We can supply higher*)

Related Products:

OGI Rough Analyzers: Scanox Marker, OGIMarker®, MEGARough, Scanox Planner, OGITender® and SAWLiner

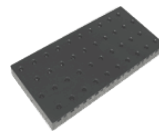
Accessories:



Sawliner



Double-Sided
Sawing Cassette



Shape Cassette

All pictures on the catalogue are for presentation only

FRIENDLY SYSTEMS - BRILLIANT RESULTS

OGI Systems Ltd.