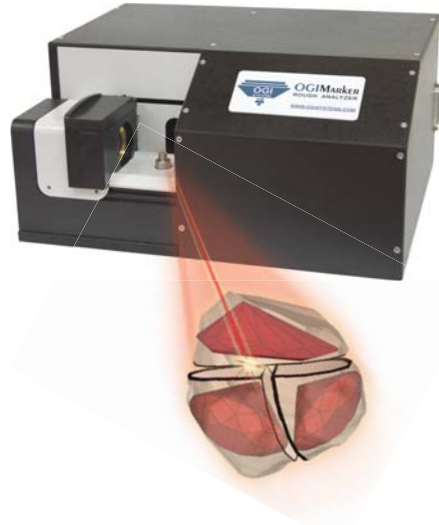


OGIMARKER®

Multi-Lens Laser Marking System

In 1999, OGI Systems Ltd. launched its computerized automatic marking system. Since the pen marking had sometimes been erased during work, OGI Systems developed a method of marking with the indelible laser. This system assists the diamond cutter in achieving an instant and accurate cutting line and facilitates the finding of the optimal yield of the rough stone.



Advanced Automatic Marking

Why is OGIMARKER® accurate?

The machine scans and produces a 3D image of the rough diamond. After analyzing the rough stone and the optimal diamond shape to be produced, the software illustrates the place it should be marked, with virtual yellow lines on the monitor.

The computer then sends instructions to the laser source, which in turn marks the cutting lines on the rough stone, exactly as they are displayed on screen. Computerized control at all stages of the marking process ensures maximum accuracy.

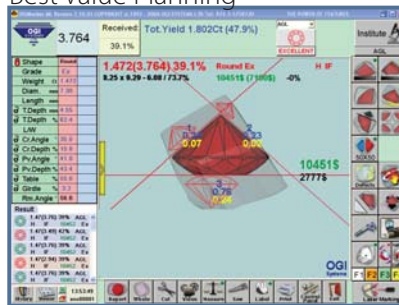
Product Highlights:

- Multi-lens model
- Built-in rough laser mapping units
- Extremely accurate laser line
- Laser speed control
- Automatic control of the laser marking (Thin Line, Dark Line)
- Visible laser line
- Marks lines for sawing
- Marks line for table
- Marks line for upper and lower girdle (stone after bruting)
- Marks line for crown and pavilion facet
- Marks all the tops (highly economical)
- Marks culet
- Marks line for defect removal
- Marks shape model (exceptionally helpful for fancy shapes)

Inclusion Analyzer



Best Value Planning



Technical Information:

Dimensions: W: 345 mm x L: 370 mm x H: 175 mm

Weight: 17 kg

Compatible Software:

OGIRough Package Software
(Pique, Best Value)
OGI FacetPro Package Software
(GIA Facetware, FireTrace®, Recator)

All pictures on the catalogue are for presentation only

FRIENDLY SYSTEMS - BRILLIANT RESULTS
OGI Systems Ltd.