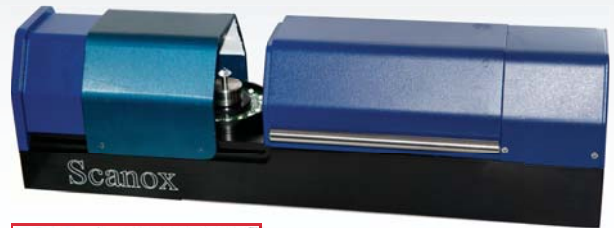


# Scanox Planner HD

## Dual Laser Mapping System

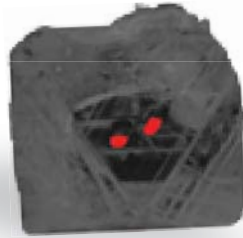


Scanox Planner offers the leading solution to Measuring, Planning and Grading of diamonds, from the rough stone up to the polished diamond.

Scanox Planner, coupled with an HR Digital Camera and advanced Dual Laser Mapping, provides the sharpest diamond image and enables detection of the actual size and exact location of any inclusion.



Surface Mapping



Inclusion Mapping



Best Value Planning

### Product Highlights:

- High Resolution Digital Camera for identification of inclusions
- Precise Dual Laser Scanner for optimal mapping of holes & grooves
- Advanced algorithms allow precise and sharp mapping of a diamond's surface
- Innovative Multi Lenses for consistency in diamond measurement of any size
- Compatible with OGI's Polished & Rough Software
- Best Value feature for achieving the optimal yield from the stone, which will eventually result in maximization of profit
- Measuring size – a choice of lenses suitable for different diamond sizes

## Leading System for Inclusion Identification

Ramat – Gan/ Antwerp/ Hong Kong/ Mumbai/ Johannesburg/ Moscow/ Tokyo/ New York/ Guangzhou

WEB: WWW.OGISYSTEMS.COM TEL: 972- 3-5758720 EMAIL: info@ogisystems.com